

DURAN®

committed to
brands.

BOTTLE CAPS & CONNECTION SYSTEMS



PART OF THE DURAN® BOTTLE SYSTEM



HUBERLAB.

committed to science



DURAN
WHEATON
KIMBLE

Excellence in your hands

DURAN® BOTTLE CAPS & CONNECTION SYSTEMS

THE PERFECT MATCH – FROM STANDARD TO SPECIAL

In scientific procedures, nothing should be left to chance. Factors such as functionality, efficiency and cost-effectiveness in laboratories can be affected by apparently simple elements such as bottle caps and connection systems.

DURAN® offers a comprehensive product range of precision closure systems, starting with high-quality standard caps suitable for numerous scientific applications.

Our range also includes identification aids, special closures for sterilization processes, caps made of high performance materials for demanding applications, connection systems, security caps and transportation accessories. DURAN® caps and connection systems fit most DIN standard laboratory bottles made by other manufacturers.

ONE
DURAN®
BOTTLE
SYSTEM





THE EVOLUTION OF THE DURAN® BOTTLE SYSTEM

Starting with the ORIGINAL in 1972, the DURAN® laboratory bottles have continued to evolve to meet the diverse needs and applications of scientists and researchers around the world. The borosilicate glass 3.3 bottles are now available in the most comprehensive range of volumes and formats.



FOR ALL YOUR NEEDS



DURAN® BOTTLE ACCESSORIES

A range of dedicated accessories that work perfectly with the DURAN® laboratory bottles. DURAN® accessories enable practical color coding, product labelling and identification. Most are reusable and long lasting just like the DURAN® bottles.



DURAN® GL 45 BOTTLE CARRYING SYSTEM

Click and Carry! Our latest innovation – a modular bottle carrying system that focuses on the safety and convenience of users in the laboratory.

Find out more on page 10

SELECT THE BEST COMPONENTS FOR YOUR NEEDS

STANDARD



These reliable components are made of food-grade polypropylene (PP) and are suitable for many laboratory applications. Our screw caps and pouring rings are fully compatible with DIN GL bottle threads.

HIGH PERFORMANCE



For more demanding processing conditions, or when the product requires a higher level of protection from the environment or contamination. Ideal for demanding applications in the pharmaceutical industry.

STEAM STERILIZATION



Membrane caps are recommended when sterilizing media. These components improve the safety and ease-of-use of the laboratory bottles during autoclaving or hot-air sterilization, and protect the contents from contamination.

CONNECTION



The robust and durable DURAN® tubing connection systems allow the easy transfer of liquids under controlled conditions, reducing the risk of contamination. Connector elements are also available for probes and stirrers.

SECURITY AND TRANSPORTATION



When extra protection is required to ensure the safety of the contents and users during storage or transport. For example, by blocking ultraviolet light, ensuring contents aren't tampered with or making transport easier and safer.

IDENTIFICATION



The accurate identification of samples and reagents is integral to the scientific process. These components provide simple color coding or labelling of laboratory bottles.

NECK SIZE

GL 25

NECK SIZE

GL 32

**Original
GL Screw Cap**
Blue, PP, Linerless



**Original
GL Screw Cap**
Blue, PP, Linerless



**Original
Pouring Ring**
Blue, PP



**High Temperature
Screw Cap**
Red, PBT, Cap liner



**Aperture
Screw Cap**
Red, PBT



Premium Cap
Colorless, PFA,
Cap liner



**PURE Premium
Screw Cap**
Colorless, PFA,
Cap liner



**High Temperature
Screw Cap**
Red, PBT, Cap liner



Pouring Ring
Red, ETFE



**Aperture
Screw Cap**
Red, PBT



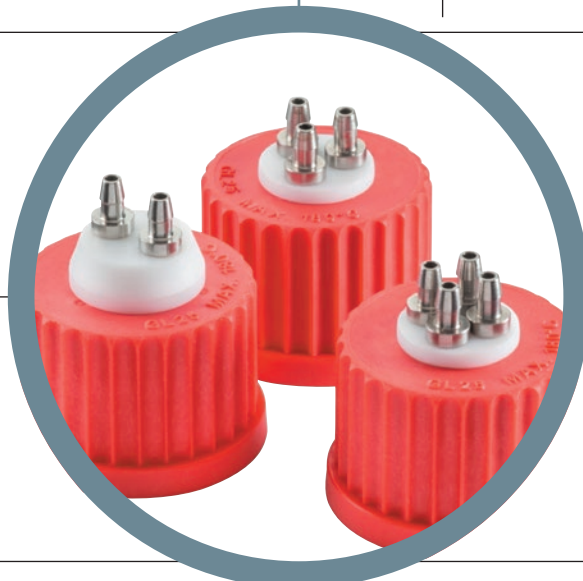
**Screw Cap
Membrane Vented**
Blue, PP



**Screw Cap
Membrane Vented**
Blue, PP
























Multiport Connector Cap
2-, 3- or 4-ports, PTFE



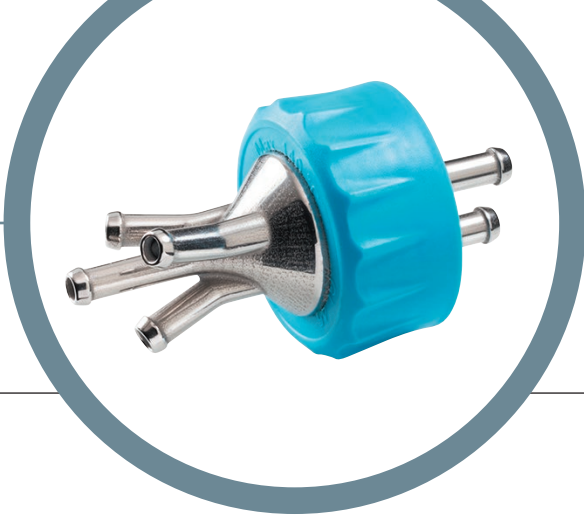
The GL 25 Multiport Connector Caps fit the smaller DURAN® bottles and are ideal for adding or sampling liquids. Constructed from food contact safe materials.

NECK SIZE

GL 45

STANDARD	<p>Original GL Screw Cap Blue, PP, Linerless</p> 	<p>Original Pouring Ring Blue, PP</p> 	<p>YOUTILITY® Screw Cap Cyan, PP, Linerless</p> 	<p>YOUTILITY® Pouring Ring Cyan, PP</p> 
	<p>High Temperature Screw Cap Red, PBT, Cap liner</p> 	<p>Pouring Ring Red, ETFE</p> 	<p>Aperture Screw Cap Red, PBT</p> 	<p>Premium Cap Colorless, PFA, Cap liner</p> 
STEAM STERILIZATION	<p>Screw Cap Membrane Vented Blue, PP</p> 	<p>YOUTILITY® Screw Cap Membrane Vented Cyan, PP</p> 	<p>Multiport Connector Cap 1-port, Stainless Steel</p> 	
	<p>Multiport Connector Cap 2- or 3-ports, Stainless Steel</p> 	<p>Multiport Connector Cap 4-ports, Stainless Steel</p> 	<p>Screw Cap 2 Hose Connectors Blue, PP</p> 	<p>Multiport Connector Cap 2- or 3-ports, Blue, PP</p> 
SECURITY AND TRANSPORTATION	<p>Tamper Evident Screw Caps Yellow or Red, PP, Linerless or Cap liner</p> 	 <p>DURAN® GL 45 BOTTLE CARRYING SYSTEM Find out more on page 10</p>		
	<p>Original GL Screw Cap Yellow, Green or Grey, PP, Linerless</p> 	<p>Pouring Ring Yellow, Green or Grey, PP</p> 	<p>YOUTILITY® Bottle Tags Various colors, Silicone</p> 	<p>YOUTILITY® Printable Labels, PS</p> 

PP = Polypropylene PBT = Polybutylene terephthalate ETFE = Ethylene-tetrafluoroethylene copolymer
PTFE = Polytetrafluoroethylene PFA = Perfluoroalkoxy polymers PS = Polyester



By using an innovative 3D metal printing process, we have optimized the design of the Multiport Connector Cap for liquid transfer applications.

Premium Pouring Ring
Colorless, PFA



PURE Premium Screw Cap
Colorless, PFA, Cap liner



PURE Premium Lip Seal Cap
Colorless, PFA, Linerless



Stopper
Grey, Bromobutyl rubber



Septum
Colorless, PTFE coated
Silicone



**Multiport Connector Cap
HPLC 4-port**
Blue, PP



**Screw Cap
for pH Sensor**
Red, PBT



**Replacement
Cap Liner**
PTFE coated
Silicone



Septum
Colorless,
Silicone



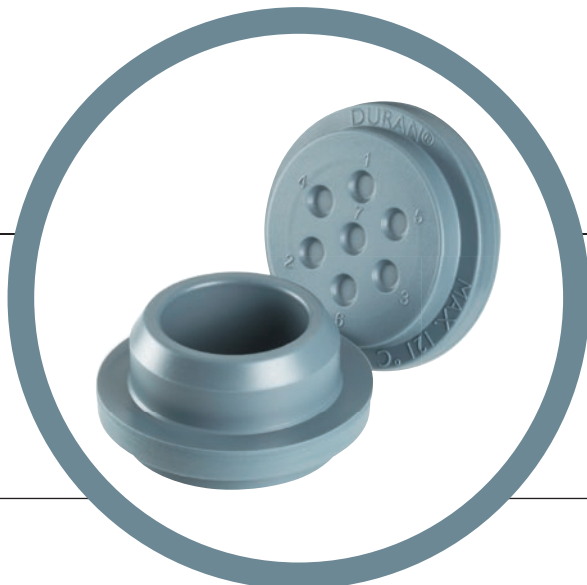
Stirred Reactor



**Screw Cap with
Temperature Probe
Gland, Blue, PP**



**Screw Cap with
Temperature Probe
Holder, Blue, PP**



The DURAN® bromobutyl rubber stopper provides a gas tight seal for all GL 45 laboratory bottles. Bromobutyl rubber is essentially impermeable to most gases, and provides a controlled environment inside the glass bottle for oxygen sensitive materials.

NECK SIZE

GL 56

STANDARD

TILT Screw Cap • White, PP, Linerless



HIGH

PERFORMANCE

The DURAN® TILT silicone sleeve blocks damaging ultraviolet (UV) light, protects the glass surface from damage, and facilitates safer handling.



STEAM

STERILIZATION

Screw Cap Membrane Vented • White, PP



CONNECTION

TILT Bottle Top Filter Unit • Clear, PES



TILT Adaptor • White, PTFE
GL 56 to GL 45



SECURITY AND
TRANSPORTATION

TILT Light Shield • White, Silicone



IDENTIFICATION

TILT Bottle Tags
Orange, Yellow, Blue or Purple,
Silicone



TILT Cap Labels • White, PS



NECK SIZE

GLS 80®

In addition to the benefits of a larger mouth, such as hassle-free filling, emptying, and cleaning, the GLS 80® caps have a special fast closing thread.

Screw Cap • Blue, PP, Linerless



Pouring Ring • Blue, PP



Screw Cap • White, PSU, Cap liner



Pouring Ring • White, PTFE



PURE Screw Cap • White, PSU, Cap liner



Screw Cap Membrane Vented • Blue, PP



Multiport Connection Cap • 4-ports, Blue, PP



Stirred Reactor



Connection Cap System for Overhead Mixer • PP



The DURAN® Stirred Reactor is ideal for the widest possible range of mixing processes in laboratories, e.g. mixing liquids or dissolving solids. The variable stirring shaft can be used for 500 ml, 1000 ml and 2000 ml DURAN® GSL 80® laboratory bottles and can be driven with standard magnetic stirrers.



DURAN® GL 45 BOTTLE CARRYING SYSTEM

The new modular Bottle Carrying System fits standard laboratory bottles that have a GL 45 neck finish and is compatible with four bottle sizes: 2, 5, 10 and 20 litres. It is ergonomically designed, and offers health & safety benefits to the user and allows easy and safe transport of bottles around the laboratory or production facility. It makes pouring liquids from the larger bottles more comfortable and safer. All materials are fully autoclavable.

Carrying Handle

- Carrying handle is suitable for bare or gloved hands
- Handle strap is flexible enough to allow pouring

Tightening Strap

- With indicator arrow
- End modified to prevent unthreading

Pouring Handle

- Ergonomically shaped
- Anti-slip grip



Silicone Support Base

- Structural support for base of larger 5, 10 and 20 litre bottles
- Protection of glass bottle base from impact during lifting or handling
- Acts as a spacer to protect glass from contact with Metal Dolly
- Moulded-in holes minimize liquid traps and allow maximum steam penetration during autoclaving

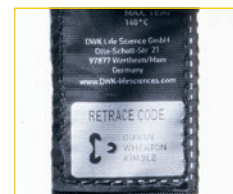


GL 45 Bottle Collar

- The collar is securely attached by pushing down over the GL 45 thread with 4 teeth that lock under transfer ring.
- The collar is only removable by cutting – so attachment is 100% secure in use
- A cut line indicator for removal of collar when required

Horizontal Straps

- Durable stitched construction
- Made from "anti-slip" material



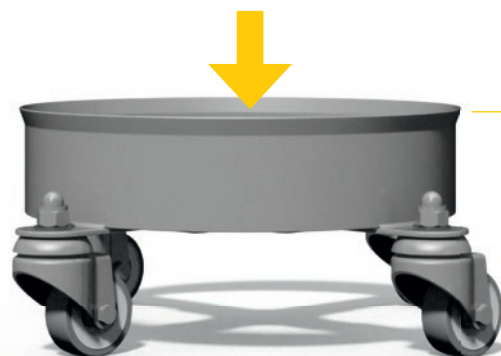
Lot Specific Retrace Code

for traceability and certification



Optional Extra: Metal Dolly

- Stainless steel dolly for 10 or 20 litre bottles (2 sizes only)
- Fully compatible with carrying system
- Easy to clean, crevice-free construction
- Optional handle is available for easier handling



FOR EASY AND SAFE CARRYING & POURING



Safe and controlled pouring using handle

- Safer pouring of liquids using a second lower "Pouring Handle" located on the side strap (Available on the 5 and 10 litre carriers only)



Easy and safe carrying using handle

- Handle attaches at the neck and fully supports the base

Fast and secure tightening

of the polypropylene straps with two side strap adjusters for the larger 5, 10 and 20 litre bottles



2 L bottle carrier in 4 colors

for color coding



4 sizes available:
2 L / 5 L / 10 L / 20 L

Contact.

HUBERLAB.

committed to science

OneStop. OneShop – HUBERLAB. bietet das Rundum-Sorglos-Paket für alle Bedürfnisse im Labor.

Profitieren Sie von unseren langjährigen Partnerschaften zu Top-Lieferanten.

Als Vollversorger für das Labor lässt unser umfassendes Sortiment keine Wünsche offen.

OneStop. OneShop – HUBERLAB. Nous offre le package sans souci pour tous les besoins de votre laboratoire.

Profitez de nos partenariats de longue date avec les meilleurs fournisseurs.

En tant que fournisseur complet pour le laboratoire, notre gamme complète ne laisse rien à désirer.

OneStop. OneShop – HUBERLAB. offers the all-included service package for all of your laboratory requirements.

Benefit from our long-standing partnerships with top-suppliers.

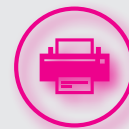
As a full-range supplier for the laboratory, our comprehensive range leaves nothing to be desired.



Wir beraten Sie gerne persönlich
Nous vous conseillons personnellement
We'll be happy to advise you personally



T +41 61 717 99 77



F +41 61 711 93 42



info.huberlab.ch



www@huberlab.ch



Let's chat
www.huberlab.ch



HUBERLAB. AG
Industriestrasse 123
4147 Aesch